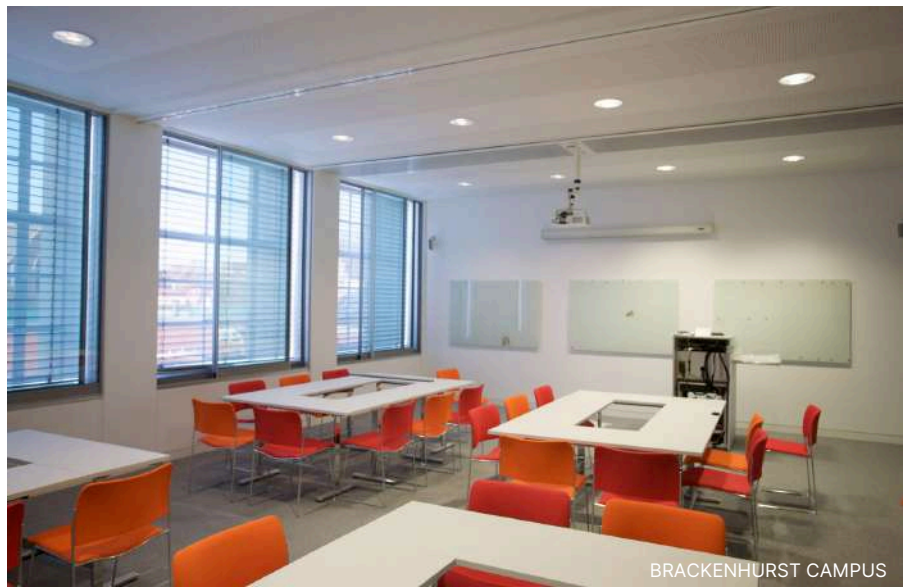


SUMMER SCHOOL PACKAGES



BRACKENHURST CAMPUS



CLIFTON SCIENCE AND TECHNOLOGY CAMPUS



NOTTINGHAM CITY CAMPUS



**Events and
Conferencing**

SUMMER SCHOOLS

NTU Events and Conferencing offers a choice of three stunning campuses suitable for your summer schools, ranging from Nottingham city centre locations to the stunning Nottinghamshire countryside.



Why NTU Events and Conferencing is perfect for your summer school:

- Remarkable accommodation designed to suit your needs
- Inclusive packages with clear pricing and no hidden costs
- Delicious prepared food by award winning chefs using Fair Trade, fresh, local and sustainable ingredients
- Exhilarating event spaces perfect for teaching, rehearsal and team building activities
- Dedicated event professionals to help coordinate your event
- Nottingham is perfectly situated in the heart of the Midlands, with great transport links to all of our campuses
- Environmentally friendly campuses with Nottingham Trent University being the fifth sustainable university in the world

SUMMER SCHOOL PACKAGES

NTU Events and Conferencing offers a flexible range of summer school packages to suit all budgets. In addition to the below, we are happy to discuss your specific requirements to form a tailored package.

	Stay 1 week +	Stay 1-6 nights
What's included	<ul style="list-style-type: none"> • En-suite accommodation • Free Wi-Fi • Linen and towels provided • Toiletry package on arrival • Room serviced weekly 	<ul style="list-style-type: none"> • En-suite accommodation • Free Wi-Fi • Linen and towels provided • Toiletry package on arrival • No room servicing
Room only price:	From £29.95 + VAT per person, per night	From £34.95 + VAT per person
Breakfast This includes a cooked breakfast with toast, cereal and orange juice, plus either tea or coffee. A healthier continental breakfast option is available if preferred.		
Bed and breakfast price: (Please note there is a minimum number of 20 on weekdays and 50 on weekends for this option)	From £36.95 + VAT per person	From £41.95 + VAT per person
Lunch: Dependent on your days activities you can opt for a packed lunch to consist of Sandwich, Crisps, Fruit, Chocolate and Drink or alternatively opt for hot fork option (one course)		
Bed, breakfast and lunch price: (Please note there is a minimum number of 20 for this option and 50 on weekends for this option)	From £44.95 + VAT per person	From £49.95 + VAT per person
Dinner This includes a hot main course plus a dessert with either tea or coffee plus water.		
Bed and breakfast, lunch and dinner price: (Please note there is a minimum number of 50 for this option, unless your stay is 3+ nights where 20 will apply)	£55.95 + VAT per person	From £60.95 + VAT per person



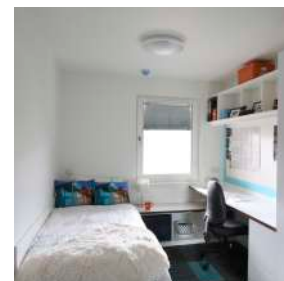
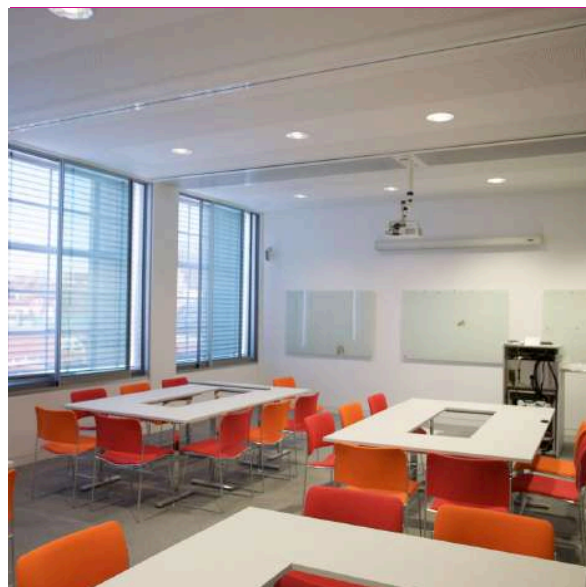
Nottingham Trent University

Newton & Arkwright

NOTTINGHAM CITY CAMPUS

Situated in the heart of Nottingham city centre, Nottingham City Campus is easily accessible by car, rail and air.

With Nottingham's main amenities and attractions on the doorstep, hotels, restaurants and entertainment facilities are all within easy walking distance for your guests.



Why choose Nottingham City Campus to host your summer school:

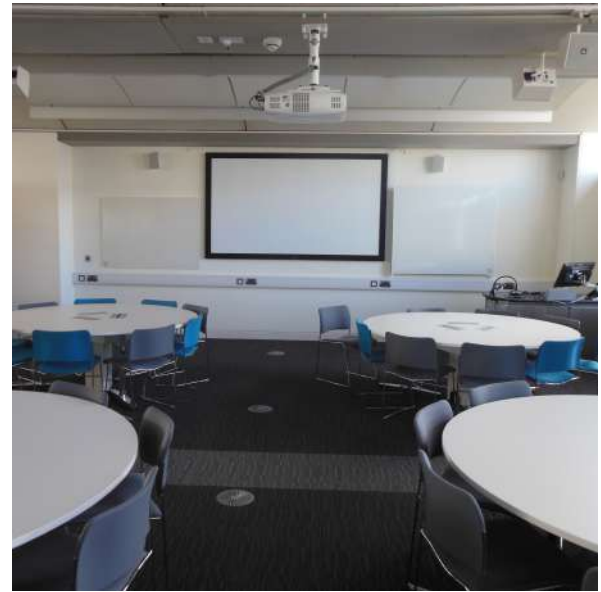
- Teaching rooms available to hire, from small rooms to lecture theatres
- Latest AV technology and free WiFi
- Sports facilities available to hire, including a climbing wall and gym
- Easy access by public transport with dedicated tram stop
- Lots of local entertainment including tourist attractions, shops and restaurants



CLIFTON SCIENCE AND TECHNOLOGY CAMPUS

Following a multi-million pound investment, Clifton Campus provides the perfect blend of peaceful spaces, and big ideas.

With a state of the art sports centre and stunning teaching space the campus provides a range of versatile rooms to suit your needs. Located only eight miles from the M1 and four miles from the bustling heart of Nottingham city centre, the campus is the ideal location for your summer school.



Why choose Clifton Science and Technology Campus:

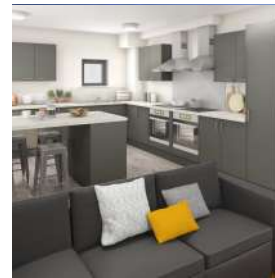
- Teaching rooms available to hire, from small rooms to lecture theatres
- Latest AV technology and free WiFi
- Sports centre with a gym, two sports halls and playing fields
- Easy access by public transport
- 10 minute drive from the city centre



BRACKENHURST CAMPUS

Brackenhurst Campus is an academic venue with a difference. Located 30 minutes from Nottingham city centre on 200 hectares of stunning countryside; water, woodlands, and elegant gardens surround the campus.

Rural charm is fused with a global, forward-thinking edge, to offer a venue with stunning views and great event space.



Why choose Brackenhurst Campus:

- Teaching rooms available to hire
- Latest AV technology and free WiFi
- Easy access by public transport
- Southwell is within walking distance and has several shops, cafes and restaurants



Events and Conferencing

Burton Street
Nottingham
NG1 4BU

Tel: +44 (0)115 848 8000

Email: enquiries@ntueventsandconferencingco.uk

www.ntueventsandconferencing.co.uk

Please note that whilst the University has taken all reasonable steps to ensure the accuracy of the content within this brochure at the time of printing, the University reserves the right to remove, vary or amend the content of the brochure at any time. For avoidance of doubt, the information provided within the content of this brochure is for guidance purposes.

© Nottingham Trent University and may not be reproduced or transmitted in any form in whole or in part without the prior written consent of Nottingham Trent University.

5663/07/14